

Exporting Waypoints from DeLorme Topo USA 7.0 to Magellan Vantage Point

DeLorme Topo is the computer interface for the DeLorme Earthmate hand-held GPS unit.

My units are a **DeLorme Earthmate PN-20** and a **Magellan Explorist 610**.

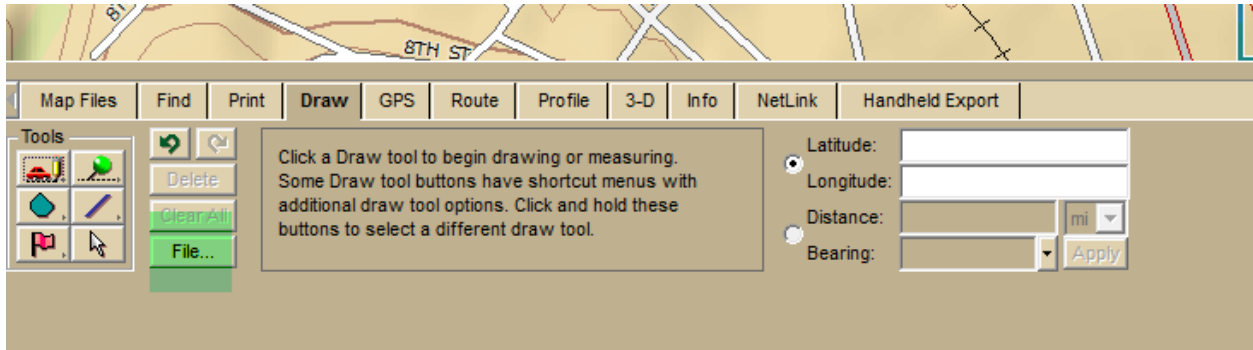
Vantage Point is the equivalent software for the Magellan Explorist series.

Open the **DeLorme** software program, **DeLorme Topo USA 7.0**. This procedure may work with other versions too. I do not have any other versions of the program

Either open an existing **Topo Project, somefile.tpx** or create a new project, setting waypoints and charting routes.

From the **Draw** tab at the bottom of the screen, click on **File**.

(See screen shot below)



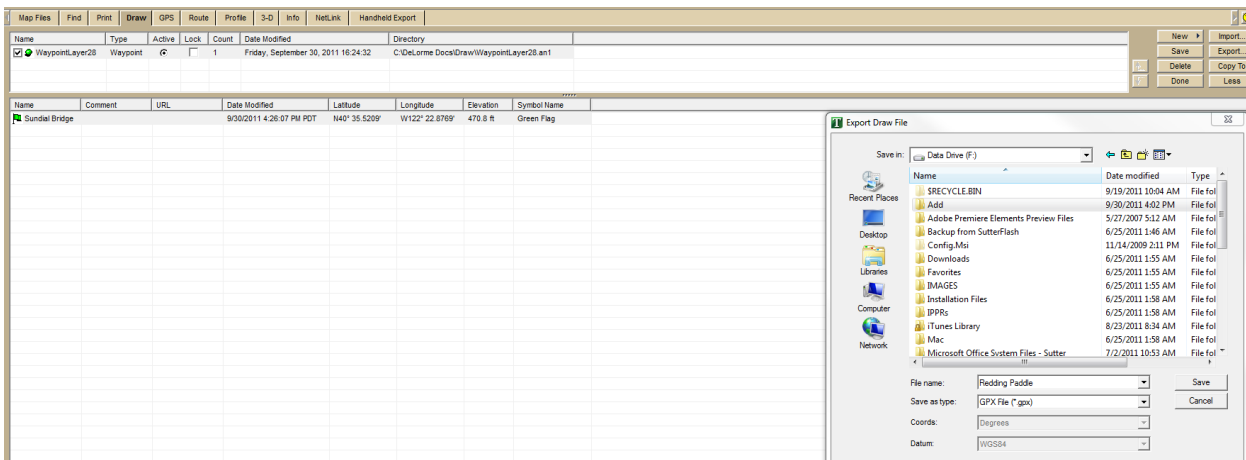
At the next screen, click on **Export**. In the **File name** box, enter any name.

Click the down arrow in the **Save in** window and choose the directory where you want to save the file.

Leave the **Save as type** **GPX File (*.gpx)**.

Click **Save**.

(See screen shot below)



Open up [Vantage Point](#), the Magellan software that provides the computer interface for your hand held Magellan GPS unit.

Find the file that you exported from Topo USA 7.0 and open it with **Vantage Point**, not with **Windows Explorer**.

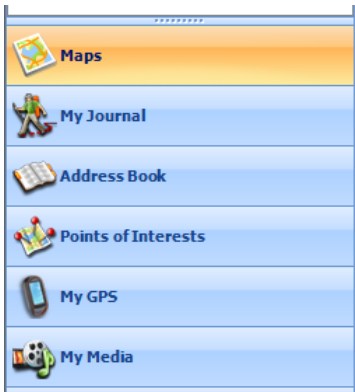
Vantage Point will open displaying a map that corresponds to the waypoints that you exported.

If you want to see a list of waypoints, click on the **My Journal** tab on the left side of the screen.

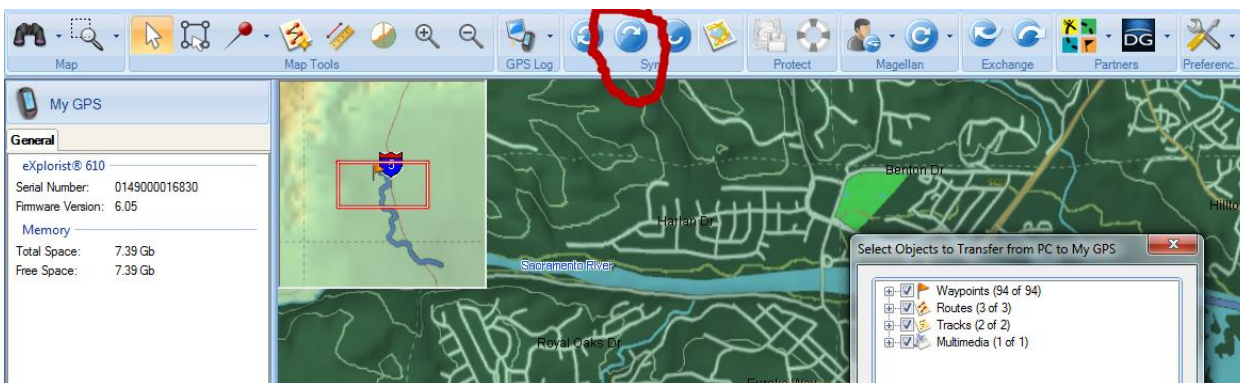
To export the waypoints from **Vantage Point** to your Magellan hand held GPS, connect the hand-held unit to your computer with the USB cable.

Once the unit is recognized, it will show up when you click the **My GPS** tab on the left hand side of the screen.

A list of your waypoints becomes visible when you click on the **My Journal** tab.



Click on the Sync button circled in the screen shot displayed below.



That will transfer from Vantage Point to your Magellan Explorist GPS hand-held unit all of the items that are checked.

Useful tip.

The operating system that I use when I run Vantage Point is Windows 7 Ultimate 64bit. If I attempt to run the program while logged on to the computer as **Administrator**, Vantage Point always crashes in very short order. It is far more stable when I log on as a **Standard User**. I am at a loss to explain why.

A handy on-line resource for converting between numerous GPS formats is [GPS Visualizer](#).

Also useful is list of [Frequently Asked Questions](#), especially the table of GPS file extensions